

The Show Must Go On

Words & Music by Freddie Mercury, Brian May, John Deacon & Roger Taylor

$\text{♩} = 84$

Bm B^{sus}2 B^{sus}4 Bm G G(♭5)

This system shows the first six measures of the piece. The guitar part consists of six chords: Bm, B^{sus}2, B^{sus}4, Bm, G, and G(♭5). The piano accompaniment features a steady eighth-note chordal pattern in the right hand and a bass line with a long note in the left hand.

Em/G G Em⁷ Em⁶ F[♯]sus4 F[♯] Em Edim

Emp-ty

This system covers measures 7-12. The guitar part includes chords: Em/G, G, Em⁷, Em⁶, F[♯]sus4, F[♯], Em, and Edim. The piano accompaniment continues with the eighth-note pattern. The vocal line begins with the word "Emp-ty" at the end of the system.

Bm B^{sus}2 B^{sus}4 Bm G G(♭5)

spa - ces, what are we liv - ing for, a - ban-doned pla - ces, I guess we know.

This system covers measures 13-18. The guitar part includes chords: Bm, B^{sus}2, B^{sus}4, Bm, G, and G(♭5). The piano accompaniment continues with the eighth-note pattern. The vocal line continues with the lyrics: "spa - ces, what are we liv - ing for, a - ban-doned pla - ces, I guess we know."

Em/G G Em7 Em6 F#sus4 F#

the score. On and on, does a - ny - bo - dy know what we are

Em Edim Bm Bsus2 Bsus4 Bm

looking for...? An - oth - er he - ro an - oth - er mind - less crime be - hind the

G G(b5) Em/G G Em7 Em6

cur - tain in the pan - to - mime, hold the line, does

F#sus4 F# Em G Bm Bsus2

a - ny - bo - dy want to take it a - ny - more? The show must go on,

Bsus4



Bm



G



G(15)



Em/G



G



the show must go on. _____

In -

Em7



Em6



F#sus4



F#



Em



Edim



-side my heart is break - ing,

my make-up may - be flak - ing but my smile

still

Bm



N.C.

C#m



C#sus2



stays on.

What - ev - er hap - pens

I leave it all _____

C#sus4



C#m



A



A(15)



F#m/A



A



to chance, an - oth - er heart - ache,

an - oth - er failed _____ ro - mance. _____

F#m7 F#m6 G#sus4 G# F#m F#dim

On and on, — does a - ny - bo - dy know — what we are liv - ing for? — I guess I'm

C#m C#sus2 C#sus4 C#m A A(5)

learn - ing, I must be warm - er now, I'll soon be turn - ing round the cor -

F#m/A A F#m7 F#m6 G#sus4 G#

- ner now. Out - side the dawn is break - ing, — but in - side in the dark — I'm ach - ing

F#m F#dim Em N.C. Bm Bsus2

to be free. — The show must go on, —

Bsus4



Bm



G



G(l-5)



Em/G



G



the show must go on. _____

Ooh, in -

Em7



Em6



F#sus4



F#



Em



Edim



-side my heart is break-ing,

my make-up may be flak - ing but my smile _____ still

Bm



Bsus2



Bsus4



Bm



G



G(l5)



stays on.

Em/G



G



Em7



Em6



F#sus4



F#



Em



Edim



F G/F Em Am Cmaj7/G F G/F

My soul is paint - ed like the wings of but - ter - flies, fair - y tales of yes - ter - day will

Em7 Am C#m7(b5) Dsus4 D N.C.

grow but ne - ver die, I can fly. My friend the show must go

Bm Bsus2 Bsus4 Bm

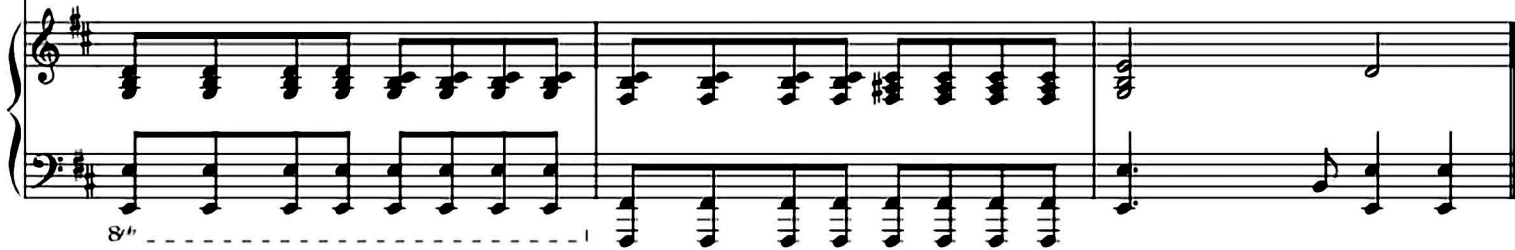
on, yeah, the show must go

G G(b5) Em/G G

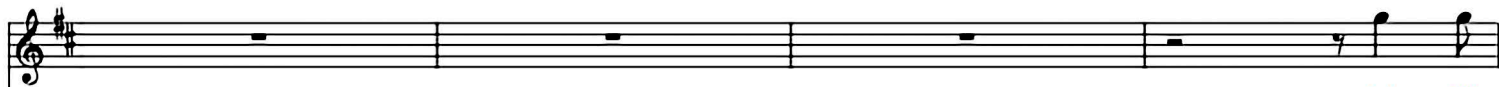
on. I'll



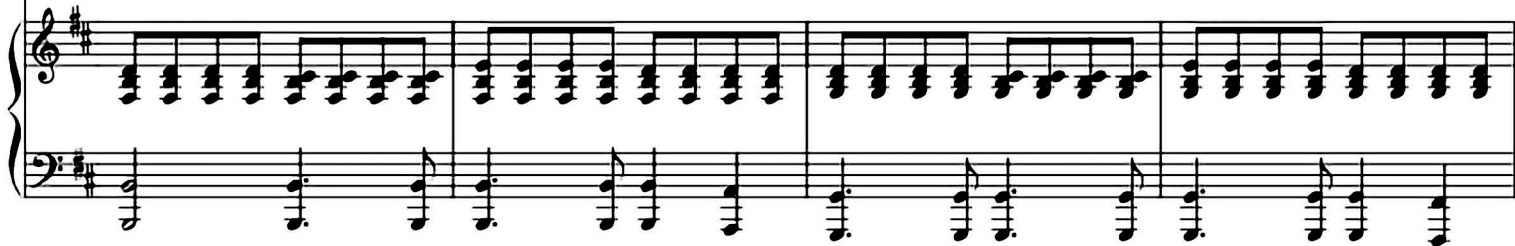
face it with a grin, I'm ne-ver giv-ing in, on _____ with the show. _____



8^u



Ooh I'll



top the bill, I'll o-ver-kill, I have to find the will to car-ry on, with the



8^b

8^b

The image shows a musical score for guitar and piano. The guitar part is written in treble clef with a key signature of one sharp (F#) and a 4/4 time signature. It features three guitar chord diagrams: Edim7, Em7, and Bm. The lyrics are: "show. (On with the show.) show. _____". The piano accompaniment is written in grand staff (treble and bass clefs) with the same key signature and time signature. The piano part includes a melodic line in the right hand and a bass line in the left hand. A large oval is drawn around the piano accompaniment in the second measure.

Edim7

Em7

Bm

show.
(On with the show.) show. _____